

\$889,200 - W Bethany Home Road (unit -), Tonopah

MLS® #6573258

\$889,200

0 Bedroom, 0.00 Bathroom,
Land on 30 Acres

N/A, Tonopah, AZ

This property in Maricopa County, Arizona, offers large future growth potential. With Interstate 10 in near proximity, there is nearby access to downtown Phoenix, Loop 101, Loop 202, and Loop 303 freeways. State Route 85 is also nearby, facilitating easy access to Interstate 8.

In addition to its immediate connectivity, the property is approximately 2 miles east of the proposed Interstate 11 alternative route. The upcoming I-11 envisioned as an integral part of the intermountain west corridor, is set to strengthen links between Arizona and Nevada.

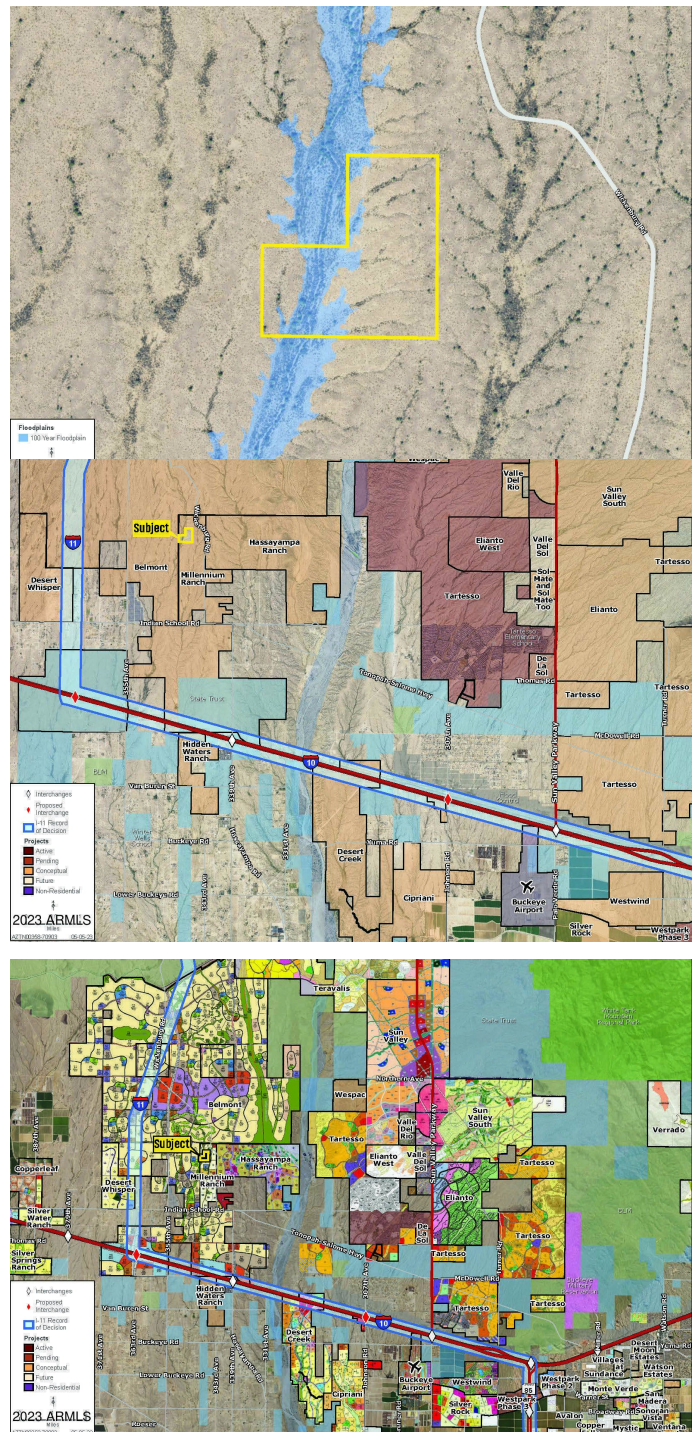
Several planned communities, including Belmont, Hassayampa Ranch, and Millennium Ranch also surround this property.

Essential Information

MLS® #	6573258
Price	\$889,200
Bathrooms	0.00
Acres	29.64
Type	Land
Status	Active

Community Information

Address	W Bethany Home Road (unit -)
Subdivision	N/A



City	Tonopah
County	Maricopa
State	AZ
Zip Code	85354

Amenities

View	Mountain(s)
------	-------------

School Information

District	Saddle Mountain Unified School District
----------	---

Additional Information

Zoning	RU-43
--------	-------

Listing Details

Listing Office	Land Advisors Organization
----------------	----------------------------



Information Deemed Reliable But Not Guaranteed. All information should be verified by the recipient and none is guaranteed as accurate by ARMLS. ARMLS Logo indicates that a property listed by a real estate brokerage other than Launch Real Estate LLC. Copyright 2025 Arizona Regional Multiple Listing Service, Inc. All rights reserved.

Listing information last updated on June 20th, 2025 at 10:15pm MST