

# \$32 - 3001 N Algodon Way, Phoenix

MLS® #6615704

**\$32**

0 Bedroom, 0.00 Bathroom, 54,000 sqft  
Comm/Industry Lease on 5 Acres

Algodon Medical Office Park, Phoenix, AZ

New Class A Medical Building with  
construction starting first quarter of 2024\*  
\*Suites range from 1,683 SF to 7,000 SF -  
contiguous\* \*Larger suites may be obtainable\*  
\*Two blocks to Banner Estrella Medical  
Center, the new Banner Hospital\*

Built in 2025

## Essential Information

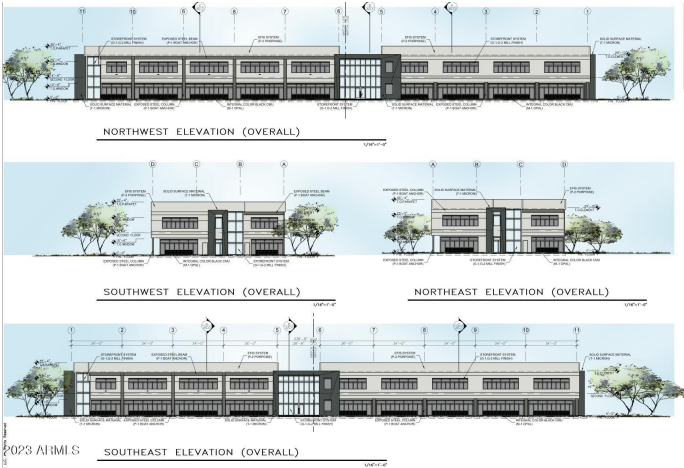
MLS® #	6615704
Price	\$32
Bathrooms	0.00
Square Footage	54,000
Acres	4.53
Year Built	2025
Type	Comm/Industry Lease
Sub-Type	Office
Status	Active

## Community Information

Address	3001 N Algodon Way
Subdivision	Algodon Medical Office Park
City	Phoenix
County	Maricopa
State	AZ
Zip Code	85037

## Amenities

Parking Spaces	310
----------------	-----



Parking                      Paved Parking, Private Parking

**Interior**

Heating                      Heat Pump, 2 or More Units

Cooling                      Heat Pump, Central A/C

**Exterior**

Roof                          Built-Up


Construction              Frame - Wood

**Additional Information**

Zoning                      PUD

**Listing Details**

Listing Office              Realty Executives

 Information Deemed Reliable But Not Guaranteed. All information should be verified by the recipient and none is guaranteed as accurate by ARMLS. ARMLS Logo indicates that a property listed by a real estate brokerage other than Launch Real Estate LLC. Copyright 2025 Arizona Regional Multiple Listing Service, Inc. All rights reserved.

Listing information last updated on June 10th, 2025 at 1:33pm MST