

\$4,166 - 1811 E Apache Boulevard (unit R2), Tempe

MLS® #6667070

\$4,166

0 Bedroom, 0.00 Bathroom, 570,052 sqft

Comm/Industry Lease on 4 Acres

MCCLINTOCK AND APACHE PARK AND RIDE, Tempe, AZ

Incredible opportunity to open a retail location along the light rail (across the street from the McClintock/Apache station) on the bottom floor of a 408-unit apartment complex. Property has four suites for immediate occupancy with excellent frontage along Apache Blvd and McClintock Rd. Plenty of FREE parking on site with ease of access from the parking garage. Clients will not have to pay to park nor have trouble finding your suite. Perfect for a drink user, professional services, fitness studio, art gallery, entertainment users, recreational users, and so much more.

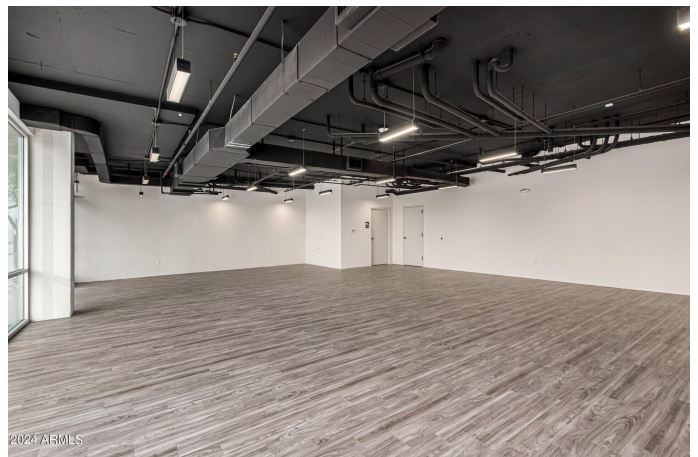
Built in 2008

Essential Information

MLS® #	6667070
Price	\$4,166
Bathrooms	0.00
Square Footage	570,052
Acres	4.26
Year Built	2008
Type	Comm/Industry Lease
Sub-Type	Other (See Remarks)
Status	Active

Community Information

Address	1811 E Apache Boulevard (unit R2)
Subdivision	MCCLINTOCK AND APACHE PARK AND RIDE
City	Tempe



County	Maricopa
State	AZ
Zip Code	85281

Amenities

Parking Spaces	7
Parking	Parking Structure, Free, Private

Interior

Heating	Heat Pump, Electric
Cooling	Central Air, Heat Pump

Exterior

Roof	Tile, Built-Up
Construction	Wood Frame, Metal Siding

Additional Information

Zoning	MU-4
--------	------

Listing Details

Listing Office	LRA Real Estate Group, LLC
----------------	----------------------------



Information Deemed Reliable But Not Guaranteed. All information should be verified by the recipient and none is guaranteed as accurate by ARMLS. ARMLS Logo indicates that a property listed by a real estate brokerage other than Launch Real Estate LLC. Copyright 2025 Arizona Regional Multiple Listing Service, Inc. All rights reserved.

Listing information last updated on June 16th, 2025 at 9:15pm MST