

\$589,500 - W Camelback Rd & N El Mirage Road (unit 14), Litchfield Park, AZ

MLS® #6693603

\$589,500

0 Bedroom, 0.00 Bathroom,
Land on 1 Acres

MONUMENT POINT BUSINESS PARK, Litchfield Park, AZ

Monument Point Business Park is nestled in the vibrant city of Litchfield Park, Arizona. Litchfield Park is a premier destination for businesses seeking a strategic and dynamic location.

The 1.28 acres of land boasts a picturesque setting against the backdrop of the White Tank Mountains. The land is zoned industrial with potential for retail or commercial development opportunities.

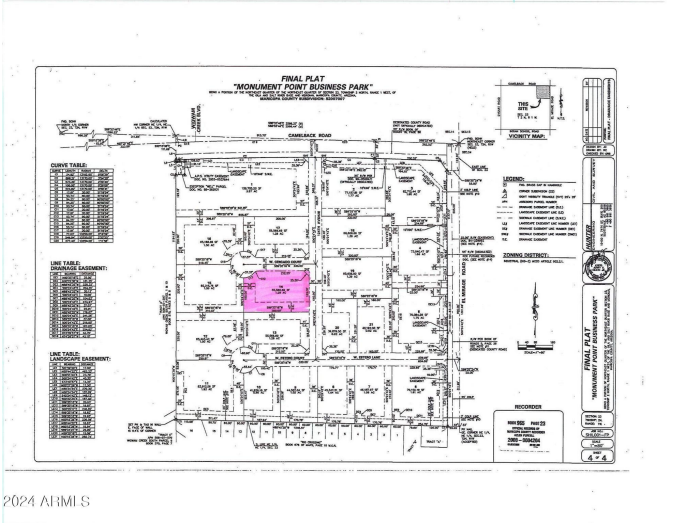
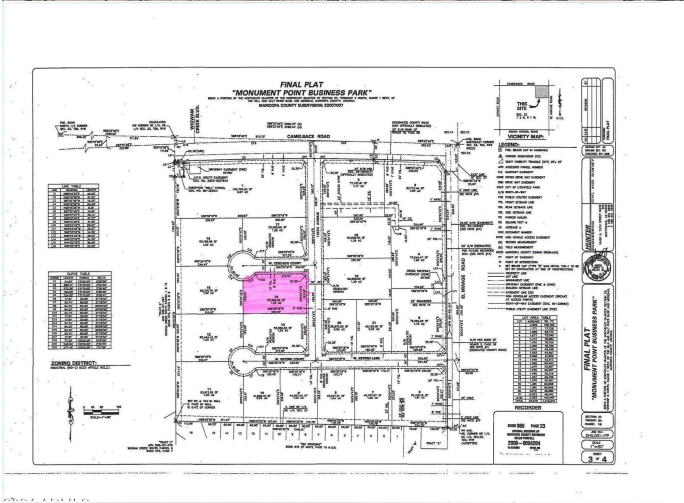
The rapidly growing West Valley is strategically located near major transportation arteries. Monument Point Business Park offers unparalleled accessibility, making it a prime hub for commerce and connectivity. Whether by road, rail, or air, businesses here enjoy seamless access to regional and international markets.

Essential Information

MLS® #	6693603
Price	\$589,500
Bathrooms	0.00
Acres	1.28
Type	Land
Status	Active

Community Information

Address	W Camelback Rd & N El Mirage Road (unit 14)
---------	---



Subdivision MONUMENT POINT BUSINESS PARK
City Litchfield Park
County Maricopa
State AZ
Zip Code 85340

School Information

District Agua Fria Union High School District

Additional Information

Zoning Industrial

Listing Details

Listing Office Williams Luxury Homes



Information Deemed Reliable But Not Guaranteed. All information should be verified by the recipient and none is guaranteed as accurate by ARMLS. ARMLS Logo indicates that a property listed by a real estate brokerage other than Launch Real Estate LLC. Copyright 2025 Arizona Regional Multiple Listing Service, Inc. All rights reserved.

Listing information last updated on July 23rd, 2025 at 5:17pm MST