

\$3,551 - 4409 E Baseline Road (unit 129), Phoenix

MLS® #6737330

\$3,551

0 Bedroom, 0.00 Bathroom, 36,385 sqft
Comm/Industry Lease on 3 Acres

BASELINE FOOTHILLS CENTER, Phoenix, AZ

+/- 4,735 SF Industrial Office located on Baseline Rd available for sublease. The sublease is a NNN deal and has term through December 31, 2025. Property is in close proximity to several major freeways, retail and business amenities, and sees over 50,000 VPD.

Built in 2000

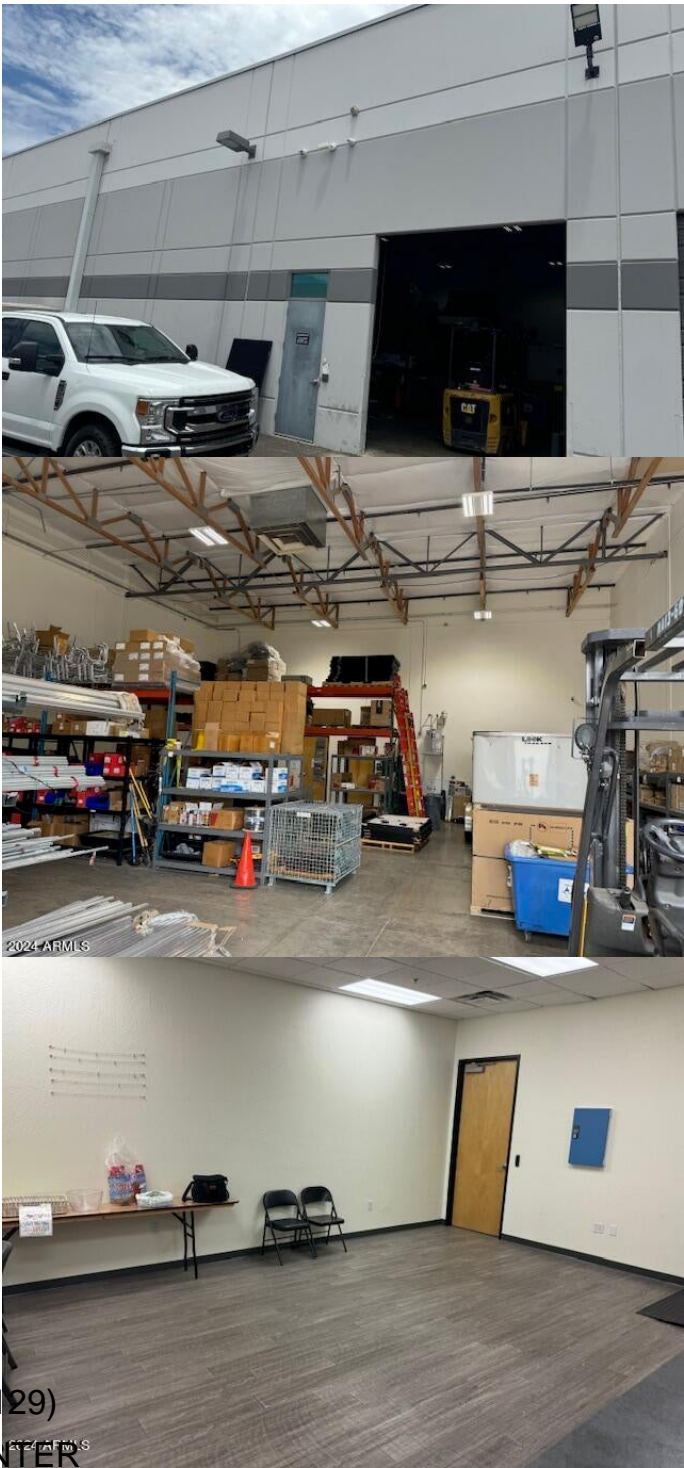
Essential Information

MLS® #	6737330
Price	\$3,551
Bathrooms	0.00
Square Footage	36,385
Acres	3.12
Year Built	2000
Type	Comm/Industry Lease
Sub-Type	Commercial, Industrial
Status	Active

Community Information

Address	4409 E Baseline Road (unit 129)
Subdivision	BASELINE FOOTHILLS CENTER
City	Phoenix
County	Maricopa
State	AZ
Zip Code	85042

Amenities



Parking Spaces	120
Parking	Parking Lot, Parking Structure

Interior

Heating	Other
Cooling	Other

Exterior


Roof	Other
Construction	Other

Additional Information

Zoning	I-P
--------	-----

Listing Details

Listing Office	The Menlo Group Commercial Real Estate
----------------	--



Information Deemed Reliable But Not Guaranteed. All information should be verified by the recipient and none is guaranteed as accurate by ARMLS. ARMLS Logo indicates that a property listed by a real estate brokerage other than Launch Real Estate LLC. Copyright 2025 Arizona Regional Multiple Listing Service, Inc. All rights reserved.

Listing information last updated on June 19th, 2025 at 7:15am MST