

\$12,997 - 121 County Rd N8521 -- (unit -), Concho

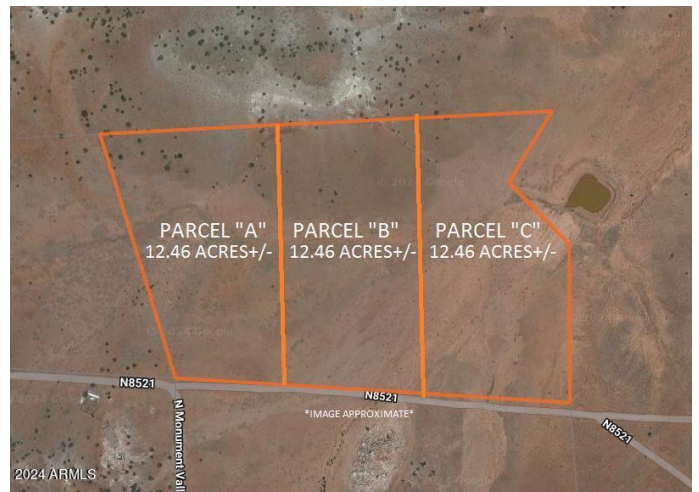
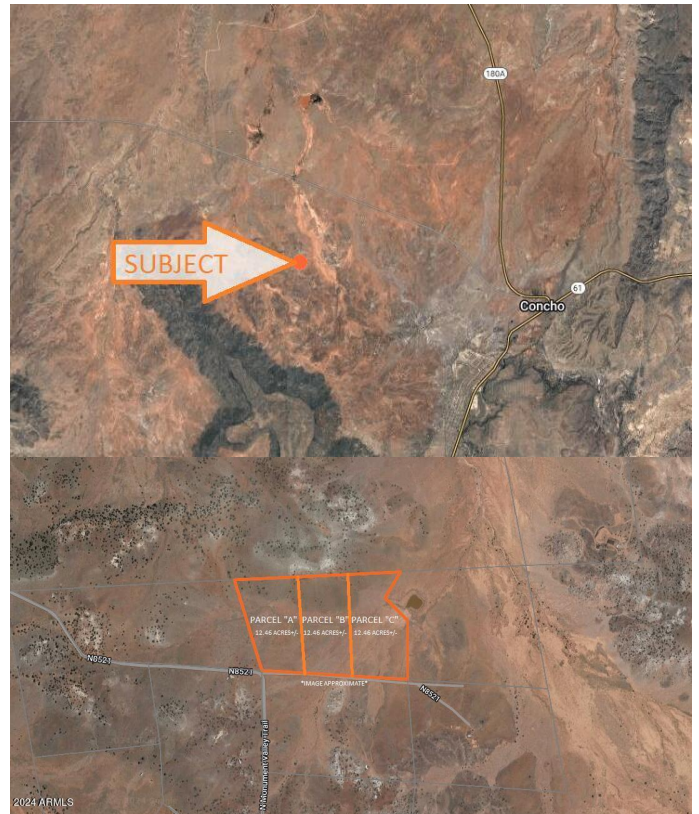
MLS® #6767799

\$12,997

0 Bedroom, 0.00 Bathroom,
Land on 12 Acres

WOODRIDGE RANCH UNIT 12, Concho, AZ

LARGE PARCEL CONSISTING OF 12.46 ACRES JUST WEST OF CONCHO, AZ. LOCATED VERY CLOSE TO PAVED COUNTY ROAD WITH EASY ACCESS TO HWY. IDEAL FOR OFF-GRID/RECREATIONAL USE & PERFECT AREA FOR YOUR WEEKEND GETAWAY FROM THE CITY, BUT STILL CLOSE ENOUGH TO TOWN. MANY ROADS IN THE AREA THAT ARE PERFECT FOR EXPLORING. APPX 5800 FT ELEVATION. ZONED "AGRICULTURE" . LISTING FOR THE APACHE COUNTY PARENT PARCEL 212-68-503 REFERRED TO AS PARCEL A ON SURVEY*SELLER MAY CARRY*BUYER TO VERIFY, ZONING / USE , UTILITIES, ACCESS & ALL PERTINENT INFORMATION*DIRECTIONS: AZ HWY 180A/CR 5020 - WEST ON CR 5020, FOLLOW N8451 EAST, THEN SOUTH, THEN WEST. SOUTH ON N8520, WEST ON N8445, SOUTH THEN WEST ON N8521 1.25 MILES. DO NOT USE ADDRESS TO LOCATE MUST USE AERIAL MAPS & GPS COORD 34.488933, -109.696809.



Essential Information

MLS® #	6767799
Price	\$12,997
Bathrooms	0.00
Acres	12.46

Type	Land
Status	Active

Community Information

Address	121 County Rd N8521 -- (unit -)
Subdivision	WOODRIDGE RANCH UNIT 12
City	Concho
County	Apache
State	AZ
Zip Code	85924

School Information

District	Sanders Unified District
----------	--------------------------

Additional Information

Zoning	Agriculture
--------	-------------

Listing Details

Listing Office	Arizona Premier Realty Homes & Land, LLC
----------------	--



Information Deemed Reliable But Not Guaranteed. All information should be verified by the recipient and none is guaranteed as accurate by ARMLS. ARMLS Logo indicates that a property listed by a real estate brokerage other than Launch Real Estate LLC. Copyright 2025 Arizona Regional Multiple Listing Service, Inc. All rights reserved.

Listing information last updated on June 22nd, 2025 at 3:30pm MST