

\$230,000 - 31215 N 239th Avenue (unit G1), Wittmann

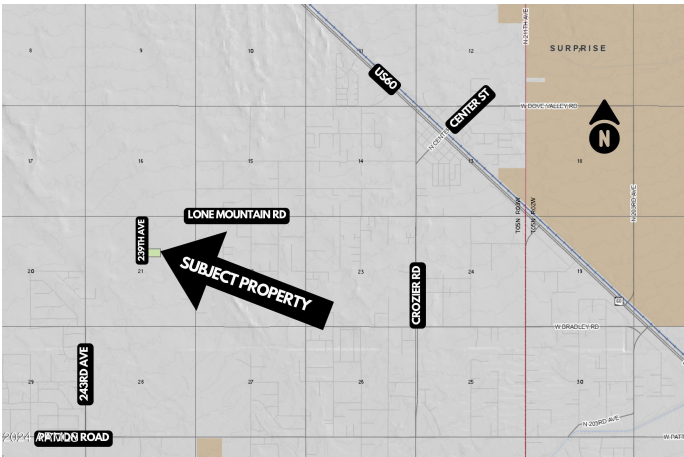
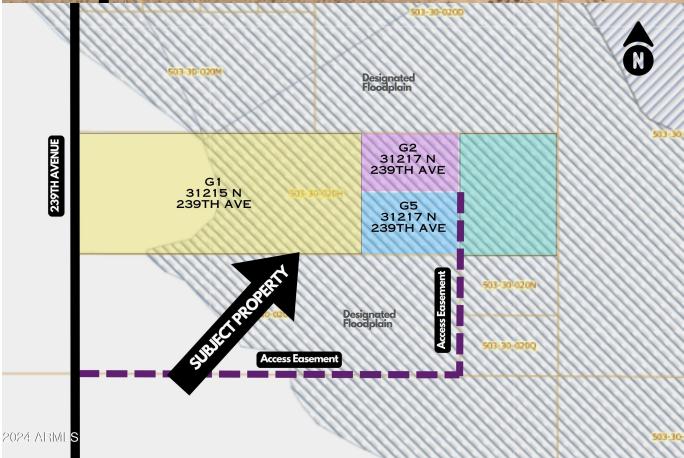
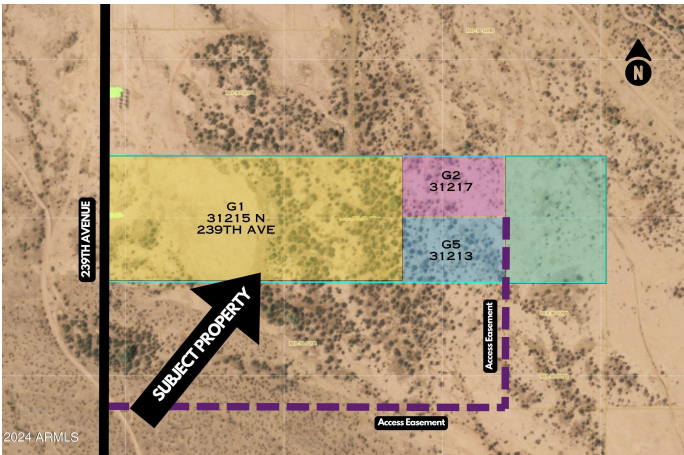
MLS® #6773332

\$230,000

0 Bedroom, 0.00 Bathroom,
Land on 6 Acres

N/A, Wittmann, AZ

Lot G1. Beautiful 6 Acre Portion of parent Lot. Start your own homestead close to town but quiet with stars. Escape to the country - but be minutes from the city. This is it! Fully buildable lot (No APZ, No Noise Contours). Bring the horses bring your toys. Site Built or Manufactured Okay! Wittmann is located in an area of current rapid growth. Chip plant commuting distance. Located along US60 in the central part of Arizona, it is about 35 miles northwest of Phoenix. No HOA come and live how you see fit. Septic and Well will need to be added



Essential Information

MLS® #	6773332
Price	\$230,000
Bathrooms	0.00
Acres	6.00
Type	Land
Status	Active Under Contract

Community Information

Address	31215 N 239th Avenue (unit G1)
Subdivision	N/A
City	Wittmann
County	Maricopa
State	AZ
Zip Code	85361

Amenities

View Mountain(s)

School Information

District Nadaburg Unified School District
Elementary Nadaburg Elementary School
Middle Nadaburg Elementary School
High Mountainside High School

Additional Information

Zoning R-43

Listing Details

Listing Office HomeSmart

ARMLS Information Deemed Reliable But Not Guaranteed. All information should be verified by the recipient and none is guaranteed as accurate by ARMLS. ARMLS Logo indicates that a property listed by a real estate brokerage other than Launch Real Estate LLC. Copyright 2025 Arizona Regional Multiple Listing Service, Inc. All rights reserved.

Listing information last updated on June 23rd, 2025 at 4:16pm MST