

\$1,866 - 2815 S Alma School Road (unit 119), Mesa

MLS® #6803754

\$1,866

0 Bedroom, 0.00 Bathroom, 38,046 sqft
Comm/Industry Lease on 3 Acres

MARLBOROUGH MESA UNIT 1, Mesa, AZ

This 1400 SF office/retail space offers a reception area, a break area, one private office, and a filing area behind the reception desk. The back room is large and versatile, offering an open area that could work for several different uses, such as a conference room or storage. May be ideal for a CPA, a cell phone store, or any professional office or retail use.

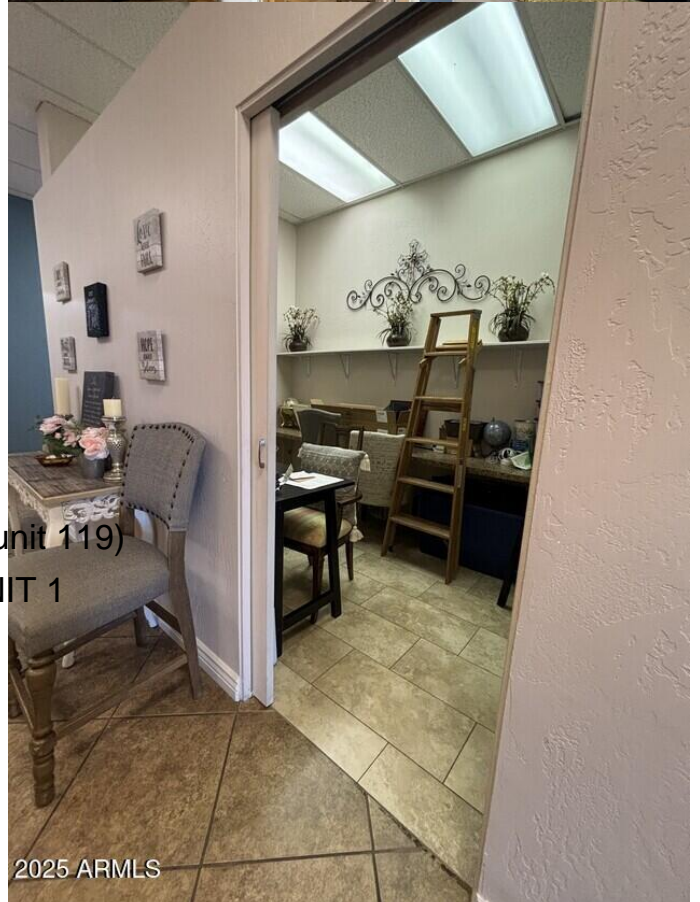
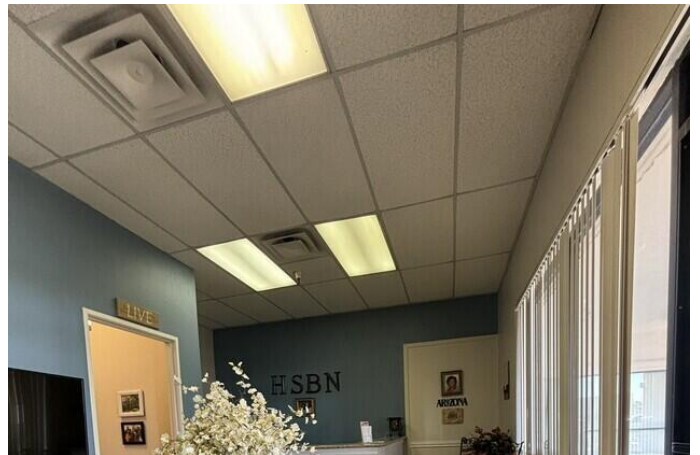
Built in 1984

Essential Information

MLS® #	6803754
Price	\$1,866
Bathrooms	0.00
Square Footage	38,046
Acres	3.16
Year Built	1984
Type	Comm/Industry Lease
Sub-Type	Commercial
Status	Active

Community Information

Address	2815 S Alma School Road (unit 119)
Subdivision	MARLBOROUGH MESA UNIT 1
City	Mesa
County	Maricopa
State	AZ
Zip Code	85210



2025 ARMLS

Amenities

Parking Spaces	148
Parking	Parking Lot, Free

Interior

Heating	Electric
Cooling	Central Air

Exterior

Roof	Built-Up
Construction	Wood Frame

Additional Information

Zoning	C-G
--------	-----

Listing Details

Listing Office	LRA Real Estate Group, LLC
----------------	----------------------------



Information Deemed Reliable But Not Guaranteed. All information should be verified by the recipient and none is guaranteed as accurate by ARMLS. ARMLS Logo indicates that a property listed by a real estate brokerage other than Launch Real Estate LLC. Copyright 2025 Arizona Regional Multiple Listing Service, Inc. All rights reserved.

Listing information last updated on July 17th, 2025 at 10:33am MST