

# \$368,000 - 24550 W Mohave Street, Buckeye

MLS® #6812050

## \$368,000

3 Bedroom, 2.00 Bathroom, 1,578 sqft  
Residential on 0 Acres

VILLAGE AT SUNDANCE PARCEL 1, Buckeye, AZ

Charming 3 bedroom 2 bath home. Open concept floor plan, Great for entertaining. Granite countertops in the kitchen and bathrooms. Stainless- steel appliances, refrigerator, dishwasher and microwave included. Large laundry room (washer, dryer, included). Custom fitted, roll-down, black-out shades on all windows. Owner's suite- large walk-in closet and separate linen closet. Park located across from the property. Close to shopping and restaurants. Backyard is a blank slate, allowing you to design it to suit your needs. Smart Home ready.

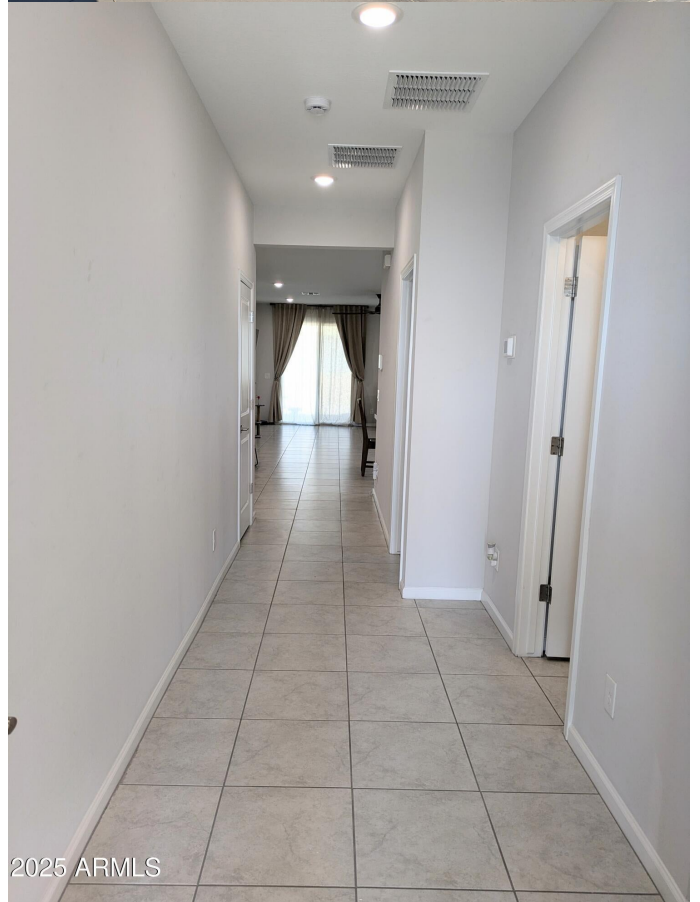
Built in 2023

## Essential Information

MLS® #	6812050
Price	\$368,000
Bedrooms	3
Bathrooms	2.00
Square Footage	1,578
Acres	0.15
Year Built	2023
Type	Residential
Sub-Type	Single Family Residence
Style	Ranch
Status	Active

## Community Information

Address 24550 W Mohave Street



2025 ARMLS

Subdivision	VILLAGE AT SUNDANCE PARCEL 1
City	Buckeye
County	Maricopa
State	AZ
Zip Code	85326

### Amenities

Amenities	Playground, Biking/Walking Path
Utilities	APS
Parking Spaces	4
# of Garages	2
Pool	None

### Interior

Interior Features	High Speed Internet, Smart Home, Granite Counters, Double Vanity, Kitchen Island, Pantry, Full Bth Master Bdrm
Appliances	Electric Cooktop
Heating	Electric
Cooling	Central Air, Ceiling Fan(s)
Fireplaces	None
# of Stories	1

### Exterior

Lot Description	Desert Front, Dirt Back
Windows	Low-Emissivity Windows, Dual Pane
Roof	Tile
Construction	Stucco, Wood Frame, Painted, Adobe

### School Information

District	Buckeye Union High School District
Elementary	John S McCain III Elementary School
Middle	John S McCain III Elementary School
High	Youngker High School

### Listing Details

Listing Office	Berkshire Hathaway HomeServices Arizona Properties
----------------	--



Information Deemed Reliable But Not Guaranteed. All information should be verified by the recipient and none is guaranteed as accurate by ARMLS. ARMLS Logo indicates that a property listed by a real estate brokerage other than Launch Real Estate LLC. Copyright 2025 Arizona Regional Multiple Listing Service, Inc. All rights reserved.

