

\$199,950 - 14 S 22nd Street, Phoenix

MLS® #6820415

\$199,950

0 Bedroom, 0.00 Bathroom, 483 sqft
Comm/Industry Sale on 0 Acres

HOLLYWOOD HEIGHTS, Phoenix, AZ

Location. Location. Location!

What an incredible investment opportunity to own a spectacular piece of property perfectly placed right in the heart of the city with quick and convenient access to Interstate 10 and State Route 51.

Just minutes to Sky Harbor International Airport, The Phoenix Suns Footprint Center, Diamondback Chase Field, the Civic Center and Downtown Phoenix.

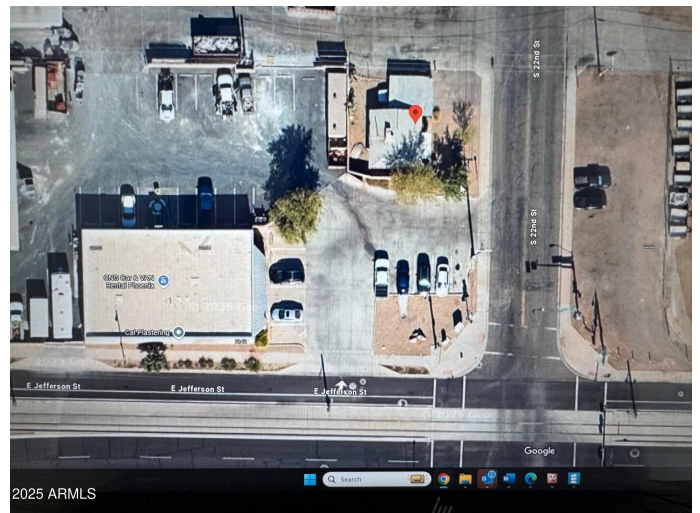
Currently Zoned C-1 (Commercial And Neighborhood Retail) Allowing for neighborhood retail and customer service businesses that service and blend with the surrounding residential neighborhoods. The business opportunities and options are truly endless.

The current building on the property was originally built as a single family home. The block home was built in 1968 on a concrete foundation. *(CLICK MORE) It was moved long ago from another location and set up on this property.

It is connected to city water and sewer and has and electric provided through APS.

The AC and roof are older and have not been in use.

The property has been gutted and will need a complete renovation. It was originally set up as a 1 bedroom, 1 bath with a kitchen and a great room. This property is being sold in its current as-is condition. Buyer to verify potential use through Maricopa County and the City of Phoenix.



It's such a great location! Close to light rail, a great option for downtown access and efficient traveling throughout the Valley is utilizing the very popular, close and convenient Valley Metro Light Rail System. In operation since the tail end of 2008, the 26-mile Valley Metro Light Rail stretches from 19th Ave. and Dunlap Ave. in upper-central Phoenix to downtown Mesa and offers quick access to downtown Phoenix, Sky Harbor International Airport, Arizona State University, Mill Avenue in Tempe and plenty more along the way. Huge potential for an income producing property or a great buy and hold for future redevelopment.

This property is the complete package, where community and convenience meet affordability.

Listed under 200k with a prime location like this is a very rare find in Downtown Phoenix. Truly a great Investment opportunity, better hurry on this one.

Built in 1968

Essential Information

MLS® #	6820415
Price	\$199,950
Bathrooms	0.00
Square Footage	483
Acres	0.06
Year Built	1968
Type	Comm/Industry Sale
Sub-Type	Other (See Remarks)
Status	Active

Community Information

Address	14 S 22nd Street
Subdivision	HOLLYWOOD HEIGHTS
City	Phoenix
County	Maricopa

State	AZ
Zip Code	85034

Amenities

Parking Spaces	4
Parking	Other

Interior

Heating	Electric
Cooling	Central Air

Exterior

Roof	Composition
Construction	Wood Frame, Block

Additional Information

Zoning	C-1
--------	-----

Listing Details

Listing Office	Shawn Bellamak Realty
----------------	-----------------------



Information Deemed Reliable But Not Guaranteed. All information should be verified by the recipient and none is guaranteed as accurate by ARMLS. ARMLS Logo indicates that a property listed by a real estate brokerage other than Launch Real Estate LLC. Copyright 2025 Arizona Regional Multiple Listing Service, Inc. All rights reserved.

Listing information last updated on June 30th, 2025 at 4:30am MST