

\$1,500,000 - Xx S Shea Boulevard (unit 1), Scottsdale

MLS® #6822314

\$1,500,000

0 Bedroom, 0.00 Bathroom,
Land on 1 Acres

114TH & SHEA RETAIL, Scottsdale, AZ

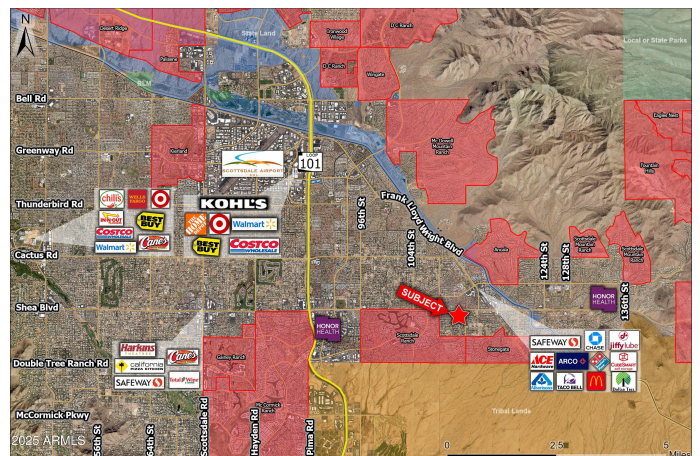
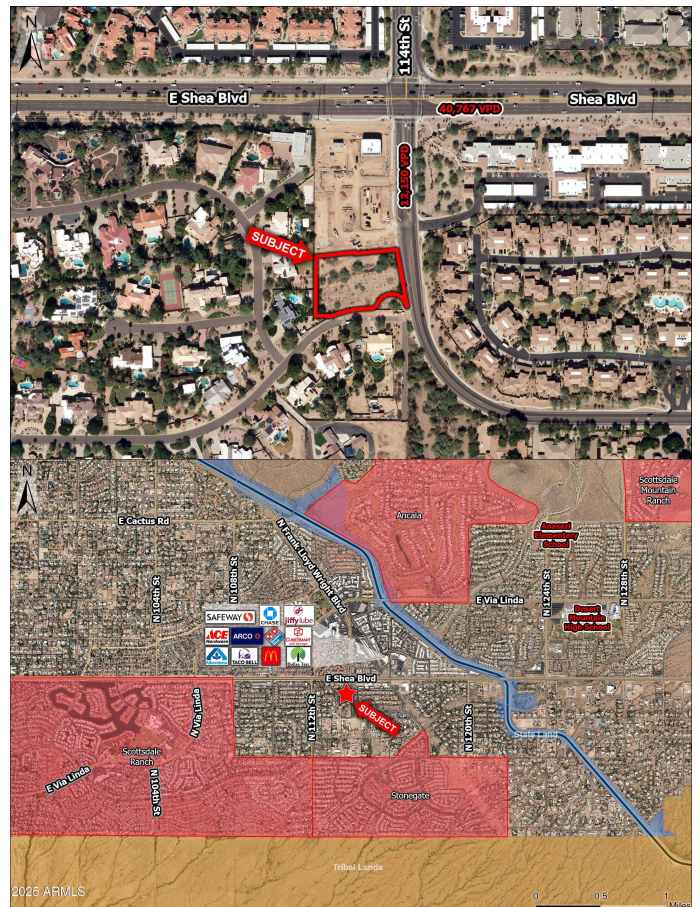
Located within the highly desirable Shea Boulevard Corridor, this offering is a rare opportunity to purchase an over 1 acre parcel of vacant land for a custom residential home. For a single lot development, all off-sites are complete including a 50'cul-de-sac and a new block screen wall screening the neighborhood from 114th street. The Property has the ability to be split into two parcels (certain development costs will be associated with that split. Property is accessed from Beryl Ave to the southwest. The immediate area has custom homes with sales in the \$3MM-\$6mm range. Site is perfect for Build to Suit or Spec build.

Essential Information

MLS® #	6822314
Price	\$1,500,000
Bathrooms	0.00
Acres	1.17
Type	Land
Status	Active

Community Information

Address	Xx S Shea Boulevard (unit 1)
Subdivision	114TH & SHEA RETAIL
City	Scottsdale
County	Maricopa
State	AZ



Zip Code 85259

Additional Information

Zoning Residential

Listing Details

Listing Office Insight Land & Investments



Information Deemed Reliable But Not Guaranteed. All information should be verified by the recipient and none is guaranteed as accurate by ARMLS. ARMLS Logo indicates that a property listed by a real estate brokerage other than Launch Real Estate LLC. Copyright 2025 Arizona Regional Multiple Listing Service, Inc. All rights reserved.

Listing information last updated on June 18th, 2025 at 10:45pm MST