

\$198,000 - 26547 N El Pedregal Circle (unit 8), Queen Creek

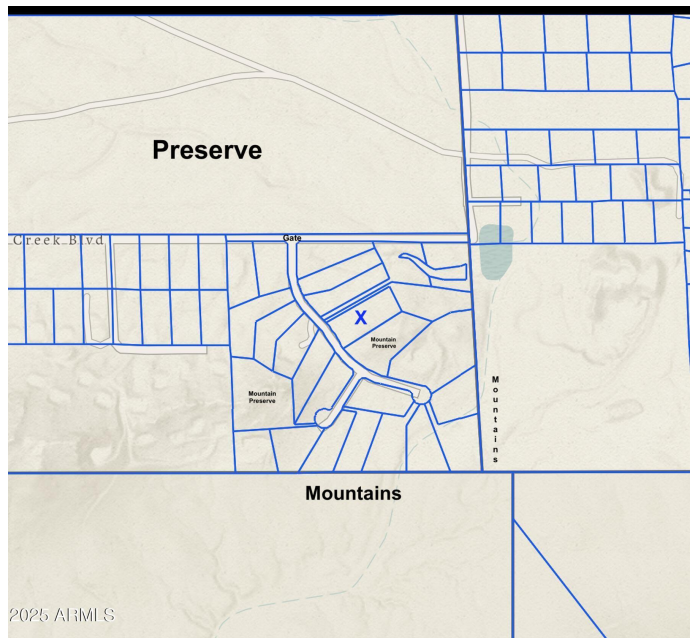
MLS® #6827558

\$198,000

0 Bedroom, 0.00 Bathroom,
Land on 2 Acres

El Pedregal, Queen Creek, AZ

An extraordinary opportunity to craft the home of your dreams amidst the breathtaking beauty of the Sonoran Desert. This exclusive 1.57-acre homesite is nestled within El Pedregal, an intimate, gated enclave of just 24 estate-sized lots, where privacy, security, and unparalleled natural surroundings set the stage for refined desert living. Tucked against the base of a mountain, this one-of-a-kind property offers sweeping 360-degree views—where the sun casts golden hues over rugged peaks by day, and the night sky unveils the twinkling lights of the city. To the north, east, and west, over 10,000 acres of pristine state parkland stretch endlessly, ensuring protected, untamed beauty for generations to come. To the south, the Wild Horse Indian Reservation preserves a sense of timeless tranquility. El Pedregal provides an elevated standard of security with gated entry, allowing for both peace of mind and an unrivaled sense of exclusivity. Imagine waking to the stillness of the desert, designing a residence that seamlessly blends with the land, and savoring panoramic vistas from your private sanctuary. This is more than a lot it is a rare canvas for your architectural vision, a gateway to an elite desert lifestyle, and a chance to own a piece of Arizona's most coveted landscape. Seize this rare opportunity to build something truly extraordinary.



Essential Information

| | |
|-----------|-----------------------|
| MLS® # | 6827558 |
| Price | \$198,000 |
| Bathrooms | 0.00 |
| Acres | 1.57 |
| Type | Land |
| Status | Active Under Contract |

Community Information

| | |
|-------------|-------------------------------------|
| Address | 26547 N El Pedregal Circle (unit 8) |
| Subdivision | El Pedregal |
| City | Queen Creek |
| County | Pinal |
| State | AZ |
| Zip Code | 85144 |

Amenities

| | |
|------|--------------------------|
| View | City Lights, Mountain(s) |
|------|--------------------------|

Exterior

| | |
|-----------------|---------------------------------------|
| Lot Description | Gated Community, Borders Pres/Pub Lnd |
|-----------------|---------------------------------------|

School Information

| | |
|------------|----------------------------------|
| District | Florence Unified School District |
| Elementary | San Tan Heights Elementary |
| Middle | San Tan Heights Elementary |
| High | San Tan Foothills High School |

Additional Information

| | |
|--------|-----|
| Zoning | RES |
|--------|-----|

Listing Details

| | |
|----------------|---------------------------------|
| Listing Office | Keller Williams Integrity First |
|----------------|---------------------------------|



Information Deemed Reliable But Not Guaranteed. All information should be verified by the recipient and none is guaranteed as accurate by ARMLS. ARMLS Logo indicates that a property listed by a real estate brokerage other than Launch Real Estate LLC. Copyright 2025 Arizona Regional Multiple Listing Service, Inc. All rights reserved.

Listing information last updated on June 22nd, 2025 at 3:01pm MST