

\$300,000 - 7430 E Chaparral Road (unit A239), Scottsdale

MLS® #6830870

\$300,000

2 Bedroom, 2.00 Bathroom, 1,002 sqft
Residential on 0 Acres

WINFIELD PLACE PHASE 2 CONDOMINIUM HOMES, Scottsdale, AZ

Looking for the perfect Scottsdale location?
This stunning 2-bedroom, 2-bathroom condo offers a beautifully remodeled kitchen and updated bathrooms, making it a must-see! Enjoy the convenience of rare in-unit washer and dryer hookups, a covered parking space, and access to a heated community pool and spa.

Situated in the heart of Scottsdale, you'll have quick access to top restaurants, shopping, and Old Town nightlife. Water, sewer, and trash are included.

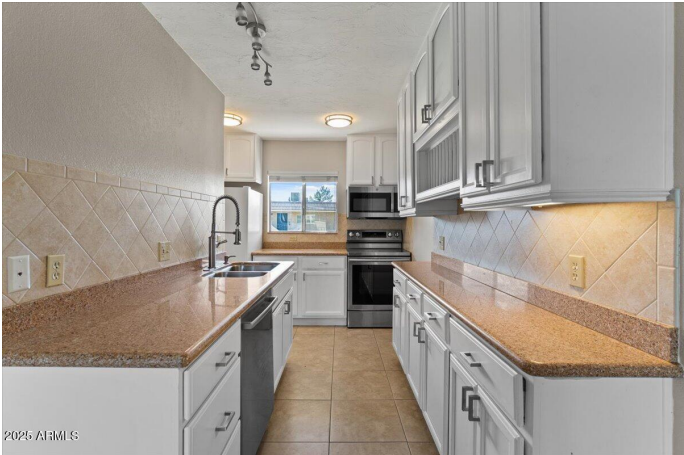
Built in 1975

Essential Information

MLS® #	6830870
Price	\$300,000
Bedrooms	2
Bathrooms	2.00
Square Footage	1,002
Acres	0.00
Year Built	1975
Type	Residential
Sub-Type	Apartment
Status	Active

Community Information

Address	7430 E Chaparral Road (unit A239)
Subdivision	WINFIELD PLACE PHASE 2 CONDOMINIUM HOMES



City	Scottsdale
County	Maricopa
State	AZ
Zip Code	85250

Amenities

Amenities	Community Spa Htd, Near Bus Stop, Community Laundry, Coin-Op Laundry, Clubhouse
Utilities	APS
Parking Spaces	1
Pool	None

Interior

Interior Features	Pantry, 3/4 Bath Master Bdrm, Granite Counters
Heating	Electric
Cooling	Central Air
Fireplaces	None
# of Stories	2

Exterior

Lot Description	Desert Back, Desert Front
Roof	Built-Up
Construction	Stucco, Wood Frame, Painted

School Information

District	Scottsdale Unified District
Elementary	Kiva Elementary School
Middle	Mohave Middle School
High	Saguaro High School

Listing Details

Listing Office	R & R Properties of Arizona, LLC
----------------	----------------------------------



Information Deemed Reliable But Not Guaranteed. All information should be verified by the recipient and none is guaranteed as accurate by ARMLS. ARMLS Logo indicates that a property listed by a real estate brokerage other than Launch Real Estate LLC. Copyright 2025 Arizona Regional Multiple Listing Service, Inc. All rights reserved.

Listing information last updated on May 14th, 2025 at 4:19pm MST