

# \$599,000 - 200 W Portland Street (unit 1222), Phoenix

MLS® #6833076

**\$599,000**

1 Bedroom, 1.00 Bathroom, 891 sqft

Residential on 0 Acres

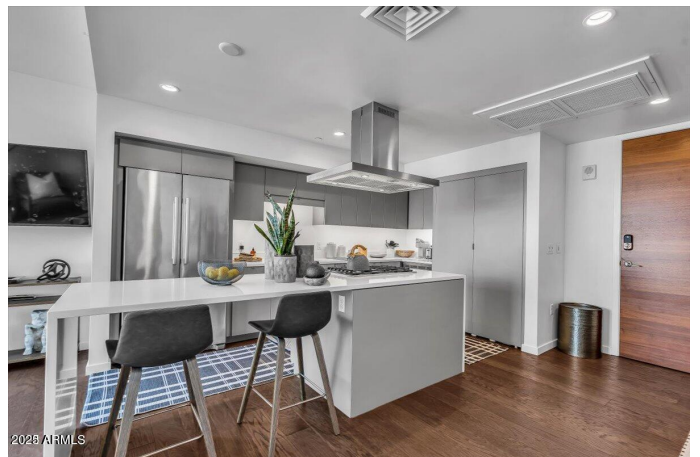
## PORTLAND ON THE PARK CONDOMINIUMS 1ST AND 2ND PHOENIX, AZ

Owner/Agent. WELCOME HOME to your architectural design masterpiece and luxurious urban flat at Portland on the Park! This is an exceptional, club-level 12th story unit (easily called a Penthouse since unit 1222 is on the top floor of the tower!). This unit is in the "22 Stack"; highly coveted floorplan, you rarely see this type of unit on the market. It includes TWO PARKING SPOTS! You will simply love the spectacular, jaw-dropping VIEWS from the North-facing, floor-to-ceiling windows. Your new living space provides a stunning skyline view overlooking the lush park and friendship gardens below, glorious Arizona's sunsets, and unobstructed view of Camelback and Piestewa Mountains. There is a full gym (not the typical condo "fitness room"). Ability to reserve rooftop AT NO COST!

Built in 2016

### Essential Information

MLS® #	6833076
Price	\$599,000
Bedrooms	1
Bathrooms	1.00
Square Footage	891
Acres	0.02
Year Built	2016
Type	Residential
Sub-Type	Apartment



Style	Contemporary
Status	Active

### Community Information

Address	200 W Portland Street (unit 1222)
Subdivision	PORTLAND ON THE PARK CONDOMINIUMS 1ST AMD
City	Phoenix
County	Maricopa
State	AZ
Zip Code	85003

### Amenities

Amenities	Gated, Community Pool Htd, Community Pool, Near Light Rail Stop, Near Bus Stop, Historic District, Community Media Room, Guarded Entry, Biking/Walking Path, Clubhouse
Utilities	APS
Parking Spaces	2
Parking	Garage Door Opener, Separate Strge Area, Assigned, Community Structure, Gated
# of Garages	2
View	City Lights, Mountain(s)
Has Pool	Yes
Pool	Fenced, Heated

### Interior

Interior Features	Eat-in Kitchen, Breakfast Bar, 9+ Flat Ceilings, Elevator, Kitchen Island, 3/4 Bath Master Bdrm, High Speed Internet, Granite Counters
Appliances	Water Purifier
Heating	Electric, Ceiling
Cooling	Central Air, Ceiling Fan(s)
Fireplaces	Fire Pit, None
# of Stories	15

### Exterior

Exterior Features	Balcony, Built-in Barbecue
Lot Description	Gravel/Stone Front, Gravel/Stone Back
Windows	Tinted Windows, Triple Pane Windows
Roof	Built-Up
Construction	Steel Frame, Stone, Block

**School Information**

District	Phoenix Union High School District
Elementary	Kenilworth Elementary School
Middle	Kenilworth Elementary School
High	Central High School

**Listing Details**

Listing Office	Call Realty, Inc.
----------------	-------------------



Information Deemed Reliable But Not Guaranteed. All information should be verified by the recipient and none is guaranteed as accurate by ARMLS. ARMLS Logo indicates that a property listed by a real estate brokerage other than Launch Real Estate LLC. Copyright 2025 Arizona Regional Multiple Listing Service, Inc. All rights reserved.

Listing information last updated on May 19th, 2025 at 4:47pm MST