

\$3,775 - 41253 N Whistling Strait Court, Phoenix

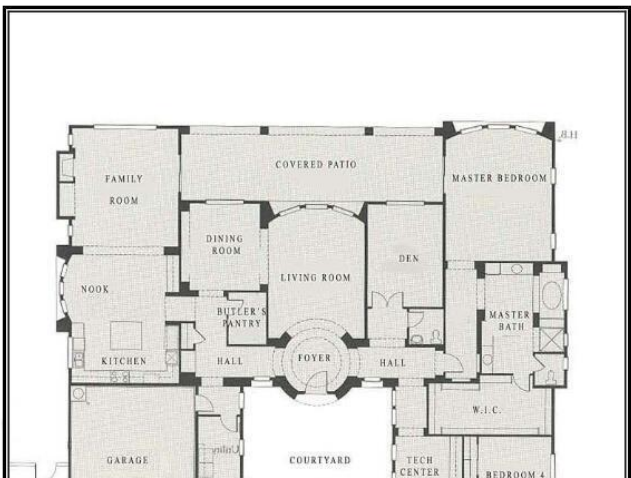
MLS® #6842757

\$3,775

5 Bedroom, 5.00 Bathroom, 4,304 sqft
Residential Lease on 0 Acres

ANTHEM Country Club, Phoenix, AZ

Stunning Golf Course & Mountain views.
Sought after guest casita, spacious courtyard
w/double iron doors, 9/24 exterior paint, 2022
remodel: double Sub-Zeros, Thermador
Stove/DW, modern built in entertainment
w/linear electric FP, wine fridge, Edgestar ice
maker never out of ice! Other features: Zoned
cooling and heating, Noche stone, fresh paint
+ carpeting (spare bdrms/casita). Granite
stone/marble throughout baths. Huge primary
suite w/stone/marble bath, jetted tub, massive
closet. Updates: Sun screens/patio
screens/gutters security door/epoxy garage,
recirc hot water. ENERGY saving LED lighting!
LOW maintenance landscape.



Built in 2005

Essential Information

MLS® #	6842757
Price	\$3,775
Bedrooms	5
Bathrooms	5.00
Square Footage	4,304
Acres	0.29
Year Built	2005
Type	Residential Lease
Sub-Type	Single Family Residence
Style	Ranch, Santa Barbara/Tuscan
Status	Active

Community Information

Address	41253 N Whistling Strait Court
Subdivision	ANTHEM Country Club
City	Phoenix
County	Maricopa
State	AZ
Zip Code	85086

Amenities

Amenities	Racquetball, Golf, Pickleball, Gated, Community Spa, Community Spa Htd, Community Pool Htd, Community Pool, Community Media Room, Guarded Entry, Tennis Court(s), Biking/Walking Path, Clubhouse, Fitness Center
Utilities	APS,SW Gas3
Parking Spaces	3
Parking	Direct Access, Garage Door Opener, RV Gate, Side Vehicle Entry
# of Garages	3
View	Mountain(s)
Pool	None

Interior

Interior Features	High Speed Internet, Granite Counters, Double Vanity, Eat-in Kitchen, Breakfast Bar, 9+ Flat Ceilings, No Interior Steps, Kitchen Island, Pantry, 2 Master Baths, Full Bth Master Bdrm, Separate Shwr & Tub, Tub with Jets
Appliances	Gas Cooktop, Water Softener
Heating	Natural Gas
Cooling	Central Air, Ceiling Fan(s), Programmable Thmstat
Fireplace	Yes
Fireplaces	Fireplace Family Rm, 1 Fireplace
# of Stories	1

Exterior

Exterior Features	Private Street(s), Private Yard
Lot Description	Sprinklers In Rear, Sprinklers In Front, Corner Lot, Desert Back, Desert Front, On Golf Course, Cul-De-Sac, Gravel/Stone Front, Gravel/Stone Back, Synthetic Grass Back, Auto Timer H2O Front, Auto Timer H2O Back
Windows	Skylight(s), Solar Screens, Dual Pane, Mechanical Sun Shds
Roof	Tile
Construction	Wood Frame, Painted, Stone

School Information

District	Deer Valley Unified District
Elementary	Diamond Canyon School
Middle	Diamond Canyon School
High	Boulder Creek High School

Listing Details

Listing Office	RE/MAX Professionals
----------------	----------------------



Information Deemed Reliable But Not Guaranteed. All information should be verified by the recipient and none is guaranteed as accurate by ARMLS. ARMLS Logo indicates that a property listed by a real estate brokerage other than Launch Real Estate LLC. Copyright 2025 Arizona Regional Multiple Listing Service, Inc. All rights reserved.

Listing information last updated on June 19th, 2025 at 10:33am MST