

\$1,850 - 11036 N 28th Drive (unit 111), Phoenix

MLS® #6844219

\$1,850

2 Bedroom, 2.00 Bathroom, 1,087 sqft
Residential Lease on 0 Acres

DESERT SHORES PHASE 3, Phoenix, AZ

PRICE REDUCTION FOR QUICK

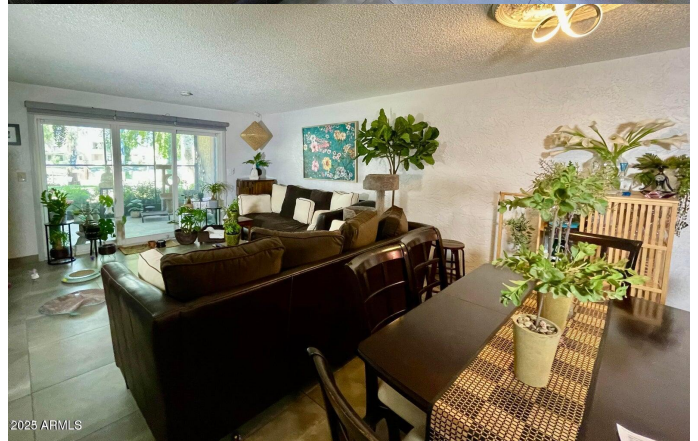
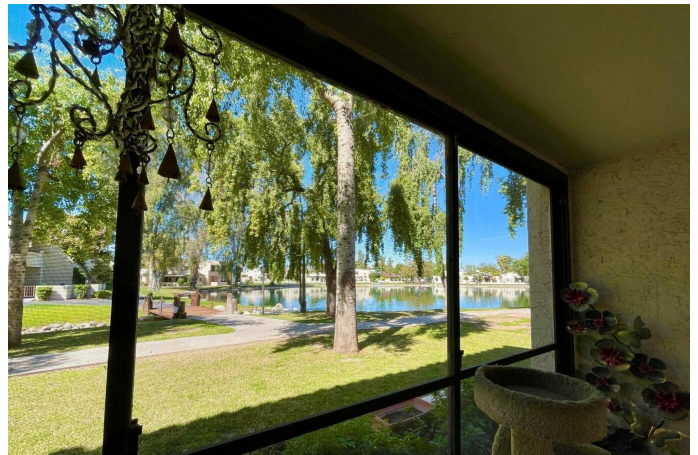
SALE,HURRY.This well-kept Condo offers incredible views of the Green Belt, and the Lake just had Price Reduction.Split Floor Plan with large Living Room, Master Bedroom has large Walk in Closet and sliding door to walk right out to the Lake. Condo will be great for your primary residency or as Second Home or even as investment.Close to lots of restaurants, I-17 and only 15 min. form Sky Harbor airport.Condo has been upgraded w/ Dual Pane Windows and Doors,Water Heater,AC,Fresh Coat of Paint,an Automatic Roll A Shade for Sliding Door leads to the Screened Patio.

Built in 1977

Essential Information

MLS® #	6844219
Price	\$1,850
Bedrooms	2
Bathrooms	2.00
Square Footage	1,087
Acres	0.02
Year Built	1977
Type	Residential Lease
Sub-Type	Apartment
Status	Active

Community Information



Address	11036 N 28th Drive (unit 111)
Subdivision	DESERT SHORES PHASE 3
City	Phoenix
County	Maricopa
State	AZ
Zip Code	85029

Amenities

Amenities	Lake, Community Spa Htd, Community Pool Htd, Near Bus Stop, Tennis Court(s), Biking/Walking Path, Clubhouse
Utilities	APS
Parking Spaces	1
Parking	Assigned
Pool	None

Interior

Interior Features	No Interior Steps, Pantry, 3/4 Bath Master Bdrm, High Speed Internet
Heating	Electric
Cooling	Central Air, Ceiling Fan(s)
Fireplaces	No Fireplace
# of Stories	3

Exterior

Lot Description	Grass Back, Auto Timer H2O Front, Natural Desert Front, Auto Timer H2O Back
Windows	Solar Screens, Dual Pane
Roof	Other
Construction	Stucco, Block

School Information

District	Glendale Union High School District
Elementary	Lakeview Elementary School
Middle	Cholla Middle School
High	Moon Valley High School

Listing Details

Listing Office	Ghanem K Algarawi
----------------	-------------------



Information Deemed Reliable But Not Guaranteed. All information should be verified by the recipient and none is guaranteed as accurate by ARMLS. ARMLS Logo indicates that a property listed by a real estate

brokerage other than Launch Real Estate LLC. Copyright 2025 Arizona Regional Multiple Listing Service, Inc. All rights reserved.

Listing information last updated on June 26th, 2025 at 3:30am MST