

\$39,947 - 13318 W Green Cactus Way (unit -), Tucson

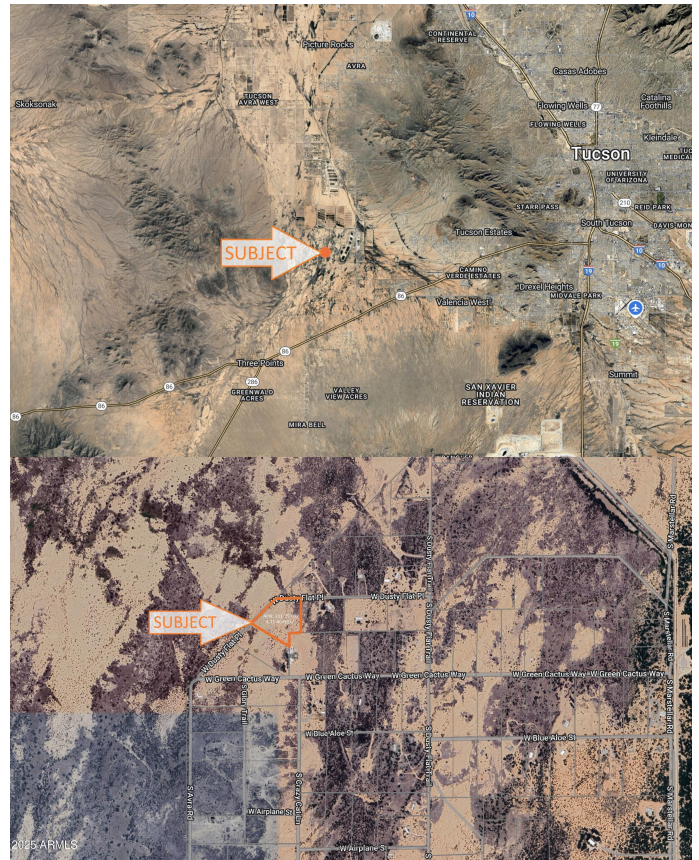
MLS® #6846298

\$39,947

0 Bedroom, 0.00 Bathroom,
Land on 4 Acres

S32 T14S R11E, Tucson, AZ

LARGE 4.11 ACRE PARCEL WEST OF TUCSON. CONVENIENT LOCATION WITH CLOSE PROXIMITY & EASY ACCESS TO HWY 86. PERFECT FOR YOUR SITE BUILT OR MANUFACTURED HOME. NO HOA! POWER CLOSE BY. ARIZONA SUNSETS & MOUNTAIN VIEWS ARE AMAZING! ZONED R-H PIMA COUNTY APN 211-35-092. SELLER MAY CARRY*BUYER TO VERIFY SCHOOLS, ZONING / USE, ACCESS, UTILITIES, ACCESS & ALL PERTINENT INFORMATION * DIRECTIONS: AZ HWY 86/SANDARIO RD - NORTH ON SANDARIO APPX 3.5 MILES, WEST ON SNYDER HILL 1.5 MILES, NORTH ON DUSTY FLAT TRAIL (PAST GREEN CACTUS WAY) 2/3 MILE, WEST ON DUSTY FLAT PLACE 1/4 MILE. PARCEL TO THE SOUTH. GPS 32.170254, -111.248873



Essential Information

MLS® #	6846298
Price	\$39,947
Bathrooms	0.00
Acres	4.11
Type	Land
Status	Active

Community Information

Address	13318 W Green Cactus Way (unit -)
Subdivision	S32 T14S R11E

City	Tucson
County	Pima
State	AZ
Zip Code	85735

School Information

Middle	Altar Valley Middle School
--------	----------------------------

Additional Information

Zoning	R-H
--------	-----

Listing Details

Listing Office	Arizona Premier Realty Homes & Land, LLC
----------------	--



Information Deemed Reliable But Not Guaranteed. All information should be verified by the recipient and none is guaranteed as accurate by ARMLS. ARMLS Logo indicates that a property listed by a real estate brokerage other than Launch Real Estate LLC. Copyright 2025 Arizona Regional Multiple Listing Service, Inc. All rights reserved.

Listing information last updated on June 11th, 2025 at 5:00am MST