

MLS® #6851020

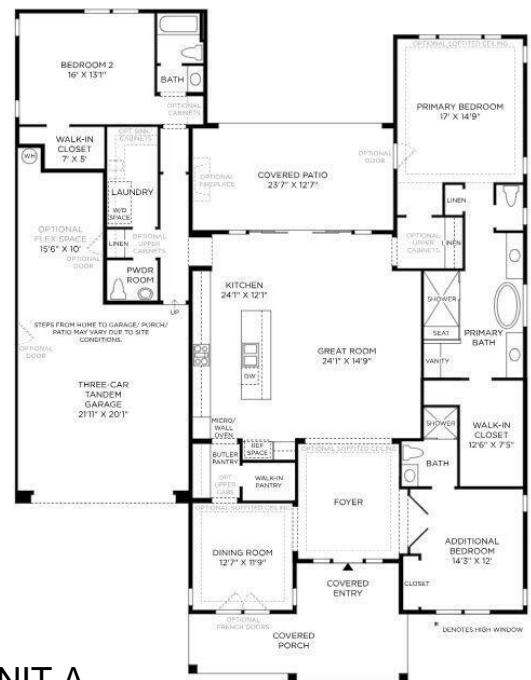
3 Bedroom, 4.00 Bathroom, 2,656 sqft
Residential on 0 Acres

The St. Helena is a truly magnificent floor plan and designed for superior entertainment living.

Built in 2025

MLS® #	6851020
Price	\$1,058,000
Bedrooms	3
Bathrooms	4.00
Square Footage	2,656
Acres	0.18
Year Built	2025
Type	Residential
Sub-Type	Single Family Residence
Status	Active

Address	11850 N Loma Linda Street
Subdivision	TOLL AT PRASADA PHASE 1 UNIT A
City	Surprise
County	Maricopa



State	AZ
Zip Code	85388

Amenities

Amenities	Pickleball, Community Spa, Community Spa Htd, Community Pool Htd, Community Pool, Guarded Entry, Golf, Tennis Court(s), Playground, Biking/Walking Path, Clubhouse
Utilities	APS,SW Gas3
Parking Spaces	5
Parking	Garage Door Opener, Tandem
# of Garages	3
Pool	None

Interior

Interior Features	9+ Flat Ceilings, Soft Water Loop, Kitchen Island, Double Vanity, Full Bth Master Bdrm, Separate Shwr & Tub
Heating	ENERGY STAR Qualified Equipment, Natural Gas
Cooling	Central Air, ENERGY STAR Qualified Equipment, Programmable Thmstat
Fireplaces	None
# of Stories	1

Exterior

Exterior Features	Private Street(s)
Lot Description	Dirt Front, Dirt Back
Windows	Low-Emissivity Windows, Dual Pane, ENERGY STAR Qualified Windows
Roof	Tile, Concrete
Construction	Synthetic Stucco, Board & Batten Siding, Wood Frame, Spray Foam Insulation

School Information

District	Dysart Unified District
Elementary	Sonoran Heights Middle School
Middle	Sonoran Heights Middle School
High	Shadow Ridge High School

Listing Details

Listing Office	Toll Brothers Real Estate
----------------	---------------------------

Information Deemed Reliable But Not Guaranteed. All information should be verified by the recipient and none is guaranteed as accurate by ARMLS. ARMLS Logo indicates that a property listed by a real estate brokerage other than Launch Real Estate LLC. Copyright 2025 Arizona Regional Multiple Listing Service, Inc. All rights reserved.

Listing information last updated on June 23rd, 2025 at 5:45am MST