

\$1,945 - 4901 E Kelton Lane (unit 1019), Scottsdale

MLS® #6851551

\$1,945

2 Bedroom, 2.00 Bathroom, 1,088 sqft

Residential Lease on 0 Acres

DISCOVERY AT TATUM PLACE TRACT A, Scottsdale, AZ

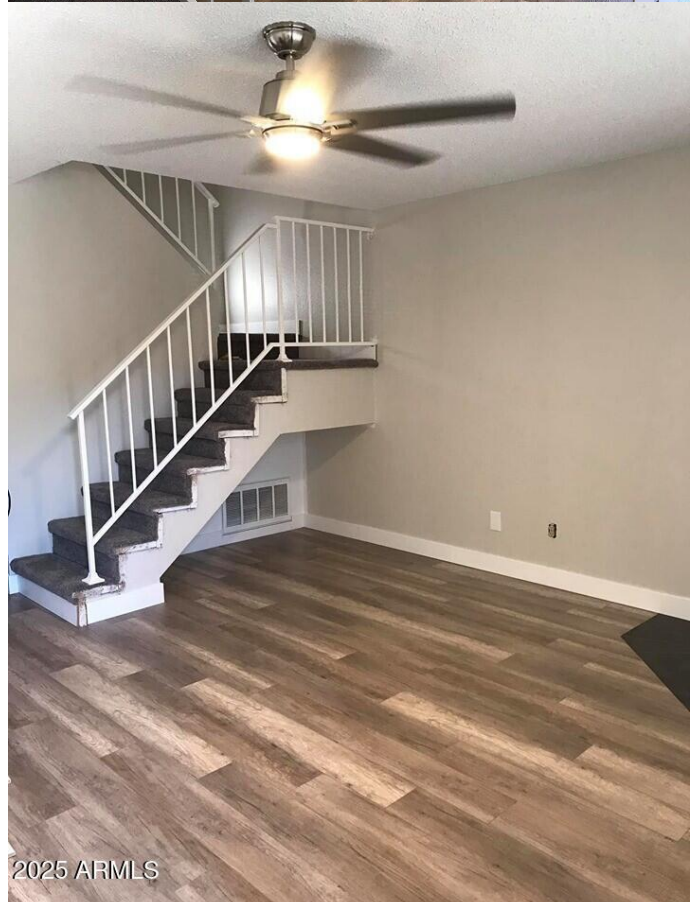
Spacious, fully updated townhome in highly desirable location off Tatum and Bell.

3-bedrooms & 2-1/2 baths with grey-tone decor thru-out. Carpet & wood-look laminate flooring. Stainless appliances, & Quartz counter tops. Bathrooms are beautiful with designer vanities, lights, mirrors, patterned floor tile and subway tile in shower/bath. Living room has white stone wood-burning fireplace. Two master bedrooms on second level. One with large arched window. Laundry washer/dryer hookup only. Back patio has tile and turf. Community pool is very close. \$1945/month base rent plus 2% tenant admin fee (\$38.90)= \$1983.90/monthly rent total. Security Deposit/Cleaning Fee is \$2050. NO PETS. \$40 application fee per adult. Proof of income must equal 3 times the rent, no past rental collections/evictions allowed. Available April 5. Please contact Property Manager for pre-screening before scheduling a viewing.

Built in 1986

Essential Information

MLS® #	6851551
Price	\$1,945
Bedrooms	2
Bathrooms	2.00
Square Footage	1,088
Acres	0.01
Year Built	1986



Type	Residential Lease
Sub-Type	Townhouse
Status	Active

Community Information

Address	4901 E Kelton Lane (unit 1019)
Subdivision	DISCOVERY AT TATUM PLACE TRACT A
City	Scottsdale
County	Maricopa
State	AZ
Zip Code	85254

Amenities

Amenities	Community Spa, Community Pool
Utilities	APS
Parking Spaces	1
Parking	Unassigned, Assigned
Pool	None

Interior

Interior Features	High Speed Internet, Upstairs, Eat-in Kitchen, 2 Master Baths, Full Bth Master Bdrm
Appliances	Electric Cooktop
Heating	Electric
Cooling	Central Air
Fireplace	Yes
Fireplaces	1 Fireplace
# of Stories	2

Exterior

Roof	Built-Up
Construction	Stucco, Wood Frame, Painted

School Information

District	Paradise Valley Unified District
Elementary	Whispering Wind Academy
Middle	Sunrise Middle School
High	Paradise Valley High School

Listing Details

Listing Office

Schreiner Realty



Information Deemed Reliable But Not Guaranteed. All information should be verified by the recipient and none is guaranteed as accurate by ARMLS. ARMLS Logo indicates that a property listed by a real estate brokerage other than Launch Real Estate LLC. Copyright 2025 Arizona Regional Multiple Listing Service, Inc. All rights reserved.

Listing information last updated on May 22nd, 2025 at 9:16pm MST