

# \$879,000 - 9740 E Seismic Avenue, Mesa

MLS® #6852434

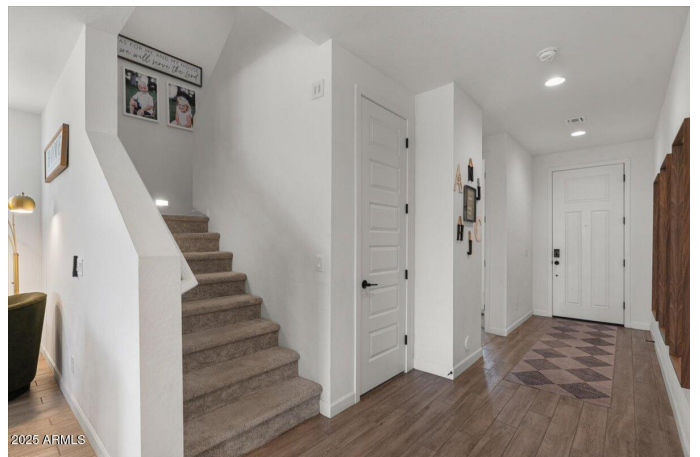
## \$879,000

5 Bedroom, 5.00 Bathroom, 3,016 sqft  
Residential on 0 Acres

EASTMARK DU 3/4 NORTH PHASE 2 AND 3, Mesa, AZ

Welcome to your dream home in the highly desirable Eastmark community of Mesa! This stunning residence offers 5 spacious bedrooms, 4.5 beautifully appointed bathrooms, a versatile loft, and a 3-car garage—providing plenty of room for family, guests, and entertaining. Step inside to find an open-concept layout filled with natural light, where the gourmet kitchen flows effortlessly into the dining and living areas. Whether you're hosting a dinner party or enjoying a quiet evening at home, this space is designed to accommodate it all. Upstairs, the loft provides the perfect bonus space for a home office, media room, or play area. The generously sized bedrooms offer comfort and flexibility, while the primary suite is a true retreat with a spa-like en-suite bathroom. Outside, your private backyard oasis awaits, featuring a sparkling pool, ramada and ample space for relaxing or entertaining under the Arizona sun. The owned solar system adds incredible energy efficiency, helping to reduce utility costs year-round.

Located in Mesa's premier master-planned community, Eastmark offers a lifestyle like no other. Residents enjoy access to the award-winning Eastmark Great Park, community pool and rec center, miles of walking and biking trails, events for all ages, The Handlebar Diner, and even a working urban farm at Steadfast Farm. Top-rated schools and a true sense of community make



Eastmark one of the most sought-after neighborhoods in the East Valley. Don't miss your chance to own this incredible home, contact your REALTOR for your private tour today!

Built in 2022

**Essential Information**

MLS® #	6852434
Price	\$879,000
Bedrooms	5
Bathrooms	5.00
Square Footage	3,016
Acres	0.15
Year Built	2022
Type	Residential
Sub-Type	Single Family Residence
Status	Active

**Community Information**

Address	9740 E Seismic Avenue
Subdivision	EASTMARK DU 3/4 NORTH PHASE 2 AND 3
City	Mesa
County	Maricopa
State	AZ
Zip Code	85212

**Amenities**

Amenities	Community Pool Htd, Community Pool, Playground, Biking/Walking Path, Clubhouse
Utilities	SRP,SW Gas3
Parking Spaces	5
Parking	Garage Door Opener, Extended Length Garage, Direct Access, Tandem, Electric Vehicle Charging Station(s)
# of Garages	3
Has Pool	Yes
Pool	Variable Speed Pump, Private

**Interior**

Interior Features	Upstairs, Breakfast Bar, 9+ Flat Ceilings, Kitchen Island, Pantry, Double Vanity, Full Bth Master Bdrm, High Speed Internet
Appliances	Water Purifier
Heating	Natural Gas
Cooling	Central Air, Ceiling Fan(s), Programmable Thmstat
Fireplaces	None
# of Stories	2

## Exterior

Lot Description	Sprinklers In Rear, Sprinklers In Front, Desert Front, Synthetic Grass Back, Auto Timer H2O Front, Auto Timer H2O Back
Windows	Low-Emissivity Windows, Dual Pane
Roof	Tile
Construction	Stucco, Wood Frame

## School Information

District	Queen Creek Unified District
Elementary	Silver Valley Elementary
Middle	Eastmark High School
High	Eastmark High School

## Listing Details

Listing Office	Haiduk Realty Experience
----------------	--------------------------



Information Deemed Reliable But Not Guaranteed. All information should be verified by the recipient and none is guaranteed as accurate by ARMLS. ARMLS Logo indicates that a property listed by a real estate brokerage other than Launch Real Estate LLC. Copyright 2025 Arizona Regional Multiple Listing Service, Inc. All rights reserved.

Listing information last updated on May 19th, 2025 at 11:47am MST