

\$2,425 - 14025 N Sussex Place (unit A), Fountain Hills

MLS® #6852551

\$2,425

3 Bedroom, 2.00 Bathroom, 1,590 sqft

Residential Lease on 0 Acres

MIRAGE CONDOMINIUMS 51, Fountain Hills, AZ

Great duplex with 3 bedrooms and 2 baths. has 2 car garage. great backyard with pool and pool service is provided. Screened in Arizona room. Must have your own washer & dryer. Vacant ready to move in.

Built in 1994

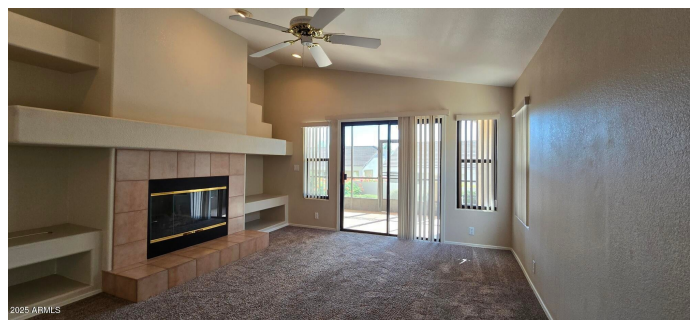
Essential Information

| | |
|----------------|-------------------|
| MLS® # | 6852551 |
| Price | \$2,425 |
| Bedrooms | 3 |
| Bathrooms | 2.00 |
| Square Footage | 1,590 |
| Acres | 0.30 |
| Year Built | 1994 |
| Type | Residential Lease |
| Sub-Type | Gemini/Twin Home |
| Style | Ranch |
| Status | Active |

Community Information

| | |
|-------------|-------------------------------|
| Address | 14025 N Sussex Place (unit A) |
| Subdivision | MIRAGE CONDOMINIUMS 51 |
| City | Fountain Hills |
| County | Maricopa |
| State | AZ |
| Zip Code | 85268 |

Amenities



| | |
|----------------|--------------------|
| Utilities | SRP |
| Parking Spaces | 4 |
| Parking | Garage Door Opener |
| # of Garages | 2 |

Interior

| | |
|-------------------|--------------------------------------|
| Interior Features | Eat-in Kitchen, 3/4 Bath Master Bdrm |
| Heating | Electric |
| Cooling | Central Air, Ceiling Fan(s) |
| Fireplace | Yes |
| Fireplaces | Fireplace Living Rm |
| # of Stories | 1 |

Exterior

| | |
|-----------------|---------------------------|
| Lot Description | Desert Back, Desert Front |
| Roof | Tile |
| Construction | Stucco, Wood Frame |

School Information

| | |
|------------|-------------------------------------|
| District | Fountain Hills Unified District |
| Elementary | McDowell Mountain Elementary School |
| Middle | Fountain Hills Middle School |
| High | Fountain Hills High School |

Listing Details

| | |
|----------------|---|
| Listing Office | Nabers Property Management & Real Estate, LLC |
|----------------|---|



Information Deemed Reliable But Not Guaranteed. All information should be verified by the recipient and none is guaranteed as accurate by ARMLS. ARMLS Logo indicates that a property listed by a real estate brokerage other than Launch Real Estate LLC. Copyright 2025 Arizona Regional Multiple Listing Service, Inc. All rights reserved.

Listing information last updated on July 13th, 2025 at 2:00pm MST