

\$520,000 - 9444 W Roma Avenue, Phoenix

MLS® #6860311

\$520,000

4 Bedroom, 3.00 Bathroom, 2,579 sqft
Residential on 0 Acres

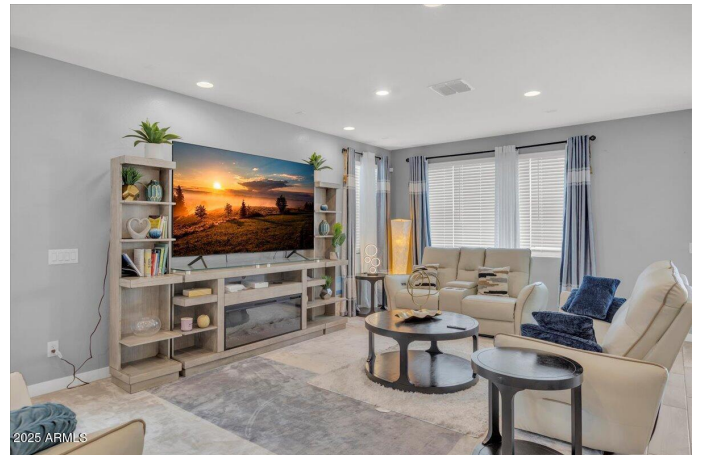
WESTERN ENCLAVE 2 PARCELS 2A AND 2B REPLAT, Phoenix, AZ

Priced below market value - don't miss this opportunity to gain instant equity!
Welcome to your dream home in the highly sought-after gated community of Western Enclave! Built in 2023, this stunning two-story home offers 4 spacious bedrooms, 2.5 bathrooms, and a thoughtfully designed open-concept layout perfect for modern living. Upstairs, enjoy a versatile loft, a spacious primary suite with two walk-in closets. Enjoy beautiful ceramic tile flooring throughout the main living areas, a spacious great room ideal for entertaining, and a large kitchen featuring stainless steel appliances, a GAS stove, and plenty of counter space for cooking and gathering.

Located just minutes from the Westgate
Located just minutes from the Westgate Entertainment District, Sportsmen's Park (home of the Arizona Cardinals), Redzone Bridge Conference Center, Tanger Outlet Mall, and a wide variety of restaurants and entertainment options. Plus, you're only 5 minutes the Loop 101 Freeway, making your daily commute a breeze.

This is your chance to own a nearly new home in a prime Phoenix location act fast before it's gone!

Don't miss this opportunity to own a nearly new home in a prime location with all the



modern features you're looking for!

Built in 2023

Essential Information

MLS® #	6860311
Price	\$520,000
Bedrooms	4
Bathrooms	3.00
Square Footage	2,579
Acres	0.12
Year Built	2023
Type	Residential
Sub-Type	Single Family Residence
Status	Active

Community Information

Address	9444 W Roma Avenue
Subdivision	WESTERN ENCLAVE 2 PARCELS 2A AND 2B REPLAT
City	Phoenix
County	Maricopa
State	AZ
Zip Code	85037

Amenities

Amenities	Gated
Utilities	SRP,SW Gas3
Parking Spaces	4
# of Garages	2
Pool	None

Interior

Interior Features	Double Vanity, Breakfast Bar, Kitchen Island, Pantry, Full Bth Master Bdrm
Heating	ENERGY STAR Qualified Equipment
Cooling	ENERGY STAR Qualified Equipment
Fireplaces	None
# of Stories	2

Exterior

Lot Description	Gravel/Stone Front, Synthetic Grass Back, Auto Timer H2O Front, Auto Timer H2O Back
Roof	Tile
Construction	Wood Frame, Painted

School Information

District	Tolleson Union High School District
Elementary	Sunset Ridge Elementary School
Middle	Sunset Ridge Elementary School - Glendale
High	Copper Canyon High School

Listing Details

Listing Office	West USA Realty
----------------	-----------------



Information Deemed Reliable But Not Guaranteed. All information should be verified by the recipient and none is guaranteed as accurate by ARMLS. ARMLS Logo indicates that a property listed by a real estate brokerage other than Launch Real Estate LLC. Copyright 2025 Arizona Regional Multiple Listing Service, Inc. All rights reserved.

Listing information last updated on June 29th, 2025 at 5:45pm MST