

\$1,600,000 - 10157 E San Salvador Drive, Scottsdale

MLS® #6877233

\$1,600,000

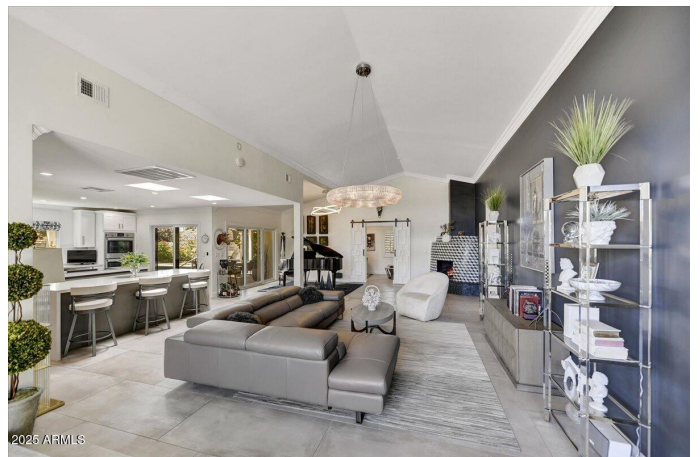
3 Bedroom, 3.00 Bathroom, 2,619 sqft
Residential on 0 Acres

SCOTTSDALE RANCH UNIT 6, Scottsdale, AZ

Located in the heart of Scottsdale, this beautifully appointed residence is tucked away on a private and quiet cul-de-sac within the highly sought-after Scottsdale Ranch community. With top-rated schools, premier shopping and dining, and world-class medical facilities just minutes away, the location is truly exceptional. From the moment you arrive, you'll be welcomed by timeless elegance and refined charm. Step inside to discover an open, light-filled floor plan featuring a spacious family room with one of three wood burning fireplaces as a focal point and an entertainer's dream kitchen. Designed with functionality and style in mind, the kitchen boasts dual islands, upgraded appliances, and abundant cabinetry perfect for hosting gatherings of any size. The serene primary suite offers peaceful views of the private garden, showcasing Arizona's natural beauty. A luxurious jetted tub and generous closet space complete this spa-like retreat.

Two guest bedrooms offer comfortable accommodations, each with views of the beautifully landscaped front. Skylights throughout the home bathe the interior in natural light, creating a bright and welcoming atmosphere.

Step outside to your own resort-style oasis. A sparkling diving pool, lounge areas, and a covered patio with a built-in BBQ and charming beehive fireplace makes this the ultimate space for year-round outdoor living. Entertaining under the romantic pergola /



ramada complemented with bistro lights will be a delight, enjoy fresh citrus from your own grapefruit, lemon and oranges, an olive tree gives this resort a mediterranean feel This Scottsdale gem effortlessly blends location, lifestyle, and luxury. Welcome to your private sanctuary in the heart of Scottsdale Ranch.

Built in 1983

Essential Information

MLS® #	6877233
Price	\$1,600,000
Bedrooms	3
Bathrooms	3.00
Square Footage	2,619
Acres	0.37
Year Built	1983
Type	Residential
Sub-Type	Single Family Residence
Status	Active

Community Information

Address	10157 E San Salvador Drive
Subdivision	SCOTTSDALE RANCH UNIT 6
City	Scottsdale
County	Maricopa
State	AZ
Zip Code	85258

Amenities

Amenities	Tennis Court(s), Playground, Biking/Walking Path
Utilities	APS
Parking Spaces	6
Parking	Attch'd Gar Cabinets, Electric Vehicle Charging Station(s)
# of Garages	2
View	Mountain(s)
Has Pool	Yes

Pool Diving Pool, Private

Interior

Interior Features High Speed Internet, Double Vanity, Master Downstairs, Eat-in Kitchen, Breakfast Bar, Soft Water Loop, Vaulted Ceiling(s), Kitchen Island, Pantry, Full Bth Master Bdrm, Separate Shwr & Tub

Appliances Water Softener Rented, Electric Cooktop

Heating Electric

Cooling Central Air, Ceiling Fan(s), Programmable Thmstat

Fireplace Yes

Fireplaces 3+ Fireplace, Exterior Fireplace, Family Room

of Stories 1

Exterior

Exterior Features Playground, Built-in Barbecue

Lot Description Sprinklers In Rear, Sprinklers In Front, Desert Back, Desert Front, Cul-De-Sac, Grass Front, Grass Back, Auto Timer H2O Front, Auto Timer H2O Back

Windows Skylight(s), Dual Pane

Roof Tile, Built-Up, Foam

Construction Stucco, Wood Frame

School Information

District Scottsdale Unified District

Elementary Laguna Elementary School

Middle Mountainside Middle School

High Desert Mountain High School

Listing Details

Listing Office Russ Lyon Sotheby's International Realty



Information Deemed Reliable But Not Guaranteed. All information should be verified by the recipient and none is guaranteed as accurate by ARMLS. ARMLS Logo indicates that a property listed by a real estate brokerage other than Launch Real Estate LLC. Copyright 2025 Arizona Regional Multiple Listing Service, Inc. All rights reserved.

Listing information last updated on June 19th, 2025 at 6:16am MST