

\$475,803 - 17535 W Fulton Street, Goodyear

MLS® #6884867

\$475,803

4 Bedroom, 3.00 Bathroom, 2,257 sqft

Residential on 0 Acres

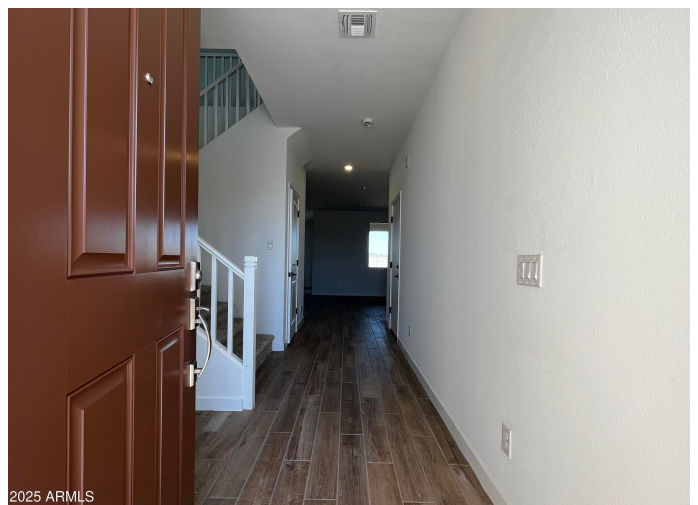
EL CIDRO PHASE 1 PARCEL 1E, Goodyear, AZ

This home will make you feel like royalty. Our King floor plan is what you have been looking for. It shows off a 4-bedroom, 3-bathroom with a 3-car tandem garage. Whether you want a large loft, massive backyard, or fully extended patio, this home has it. Looking at the kitchen, it boasts some wonderful features, including beautiful, authentic brown cabinets and frost quartz countertops with a glossy tiled backsplash. The kitchen showcases the best of both worlds with modern style and functionality. The community offers a basketball and sand volleyball court, tot lots for play, and inviting green spaces with picnic areas, ideal for relaxation or gatherings. This home seamlessly blends comfort and convenience, promising a lifestyle of relaxation and enjoyment. Don't miss out!

Built in 2025

Essential Information

| | |
|----------------|-------------------------|
| MLS® # | 6884867 |
| Price | \$475,803 |
| Bedrooms | 4 |
| Bathrooms | 3.00 |
| Square Footage | 2,257 |
| Acres | 0.17 |
| Year Built | 2025 |
| Type | Residential |
| Sub-Type | Single Family Residence |



| | |
|--------|---------|
| Style | Spanish |
| Status | Active |

Community Information

| | |
|-------------|----------------------------|
| Address | 17535 W Fulton Street |
| Subdivision | EL CIDRO PHASE 1 PARCEL 1E |
| City | Goodyear |
| County | Maricopa |
| State | AZ |
| Zip Code | 85338 |

Amenities

| | |
|----------------|--|
| Amenities | Playground, Biking/Walking Path |
| Utilities | APS,SW Gas3 |
| Parking Spaces | 5 |
| Parking | Tandem Garage, Garage Door Opener, Direct Access |
| # of Garages | 3 |
| Pool | None |

Interior

| | |
|-------------------|---|
| Interior Features | High Speed Internet, Smart Home, Double Vanity, Upstairs, 9+ Flat Ceilings, Soft Water Loop, Kitchen Island, 3/4 Bath Master Bdrm |
| Heating | ENERGY STAR Qualified Equipment, Natural Gas, Ceiling |
| Cooling | Central Air, ENERGY STAR Qualified Equipment, Programmable Thmstat |
| Fireplaces | None |
| # of Stories | 2 |

Exterior

| | |
|-------------------|--|
| Exterior Features | Private Yard |
| Lot Description | Sprinklers In Front, Desert Front, Dirt Back, Auto Timer H2O Front |
| Windows | Low-Emissivity Windows, Dual Pane, Vinyl Frame |
| Roof | Tile |
| Construction | Stucco, Wood Frame, Low VOC Paint, Painted |

School Information

| | |
|------------|--------------------------------------|
| District | Agua Fria Union High School District |
| Elementary | Copper Trails |
| Middle | Copper Trails |

High Desert Edge High School

Listing Details

Listing Office Landsea Homes



Information Deemed Reliable But Not Guaranteed. All information should be verified by the recipient and none is guaranteed as accurate by ARMLS. ARMLS Logo indicates that a property listed by a real estate brokerage other than Launch Real Estate LLC. Copyright 2025 Arizona Regional Multiple Listing Service, Inc. All rights reserved.

Listing information last updated on July 26th, 2025 at 5:30am MST